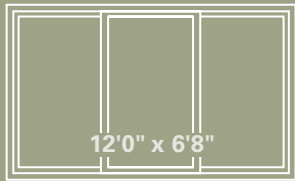
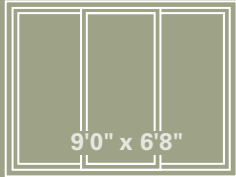
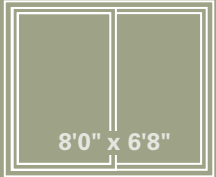
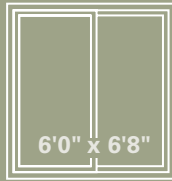




THE *Ultra Patio Door* COLLECTION
PREMIUM VINYL PATIO DOORS

www.polaristechnologies.com

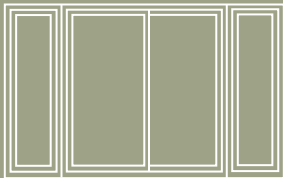
standard sizes



custom sizes

two panel widths - 36" to 94 7/8"
 three panel widths - 95" to 142 7/8"
 max height - 84"

standard sidelight sizes



2'7" x 6'8" • 3'1" x 6'8" • 4'1" x 6'8"

custom sidelight sizes - width 1'6" to 4'1"
 max height - 84"



Smooth gliding, solid-steel, zinc-plated tandem rollers. Iridium coating on exposed parts enhances corrosion resistance.

OPEN + SHUT

How would you like your door to open as viewed from outside?
 Two panel - left or right panel glides
 Three panel - center panel glides left or right

Door shown with optional smooth colonial muntins & satin nickel handle



solid brass multi-point handle

MULTI-POINT LOCK SECURITY*

When door contacts frame, steel hooks automatically lock at two additional points along the frame.

FEATURES + BENEFITS

energySmart® Supreme Glass 7/8" Intercept® spacer reduces temperature transfer and condensation
 Low-e coating reduces ultraviolet light transmission
 Ask about more ENERGY STAR® qualified glass upgrades

Safety glass

Foot operated dead bolt provides an extra lock point for secure partial opening.

Strong, extruded aluminum screen frame in white, tan or brown glides on 1 1/4" steel rollers

Sloped, aluminum-reinforced sill guides rainwater outside and away.



INTERNAL TILT MINI BLINDS*



alabaster



white



clay



gold



Fusion-welding at door panel corners transforms four vinyl extrusions into a strong, one-piece door.

*options

PERFECT PATIO DOOR

Our R&D department is vigilant in testing and updating designs and components.

The Polaris® vinyl formulation retains its smooth surface and color.

When measuring the rate of heat flow through a patio door; vinyl performs as well or better than framing materials like wood or aluminum.

Your pristine Polaris patio door will be energy efficient and maintenance free for a lifetime.

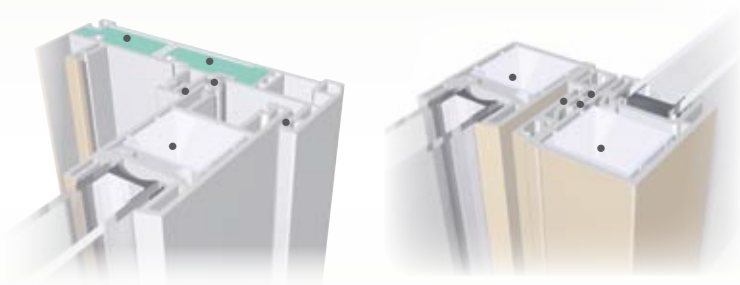
FEATURES + BENEFITS

Vertical main frame and door panel extrusions are reinforced with aluminum.

Foam filling injected into vertical main frame extrusions

Triple weather-stripping where door panel and main frame meet

Door panels meet with over and under interlock and feature double weather-stripping.



EXTERIOR PAINT - 20 YEAR WARRANTY against fading, peeling or blistering

Unique, high-performance exterior coating specially formulated for PVC

Semi gloss finish • Color matched contour internal grids, caulk & coil* †

Crack and impact resistant • Touch up paint included • Lead time 4-6 weeks

AAMA testing ensures that coating resists strong solvents, heat gain and thermal shock

*Polaris®
Paint**



† Coil not exact match



HANDLE SETS w/ exterior key lock



antique brass*

polished brass*

satin nickel*

white, tan, coppertone
standard

for exterior painted doors - exterior hardware supplied is same color / finish as interior hardware

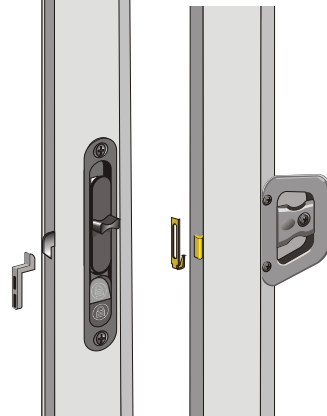
MORTISED HOOK LOCKS



two point*

standard
single point

SCREEN HANDLES



1580*
mortised
with lock

standard

DECORATIVE GLASS*

designs



colonial



prairie
style



double
prairie style



diamond
n/a
contour or
brasses

internal tilt mini blinds*



alabaster



white



clay



gold

internal muntin styles



smooth



contour



antique
brass



slim line
brass

view glass 3/8" v-groove, interior surface of glass unit pane



view



floral view



elongated
floral view



arch view

WINDOW & MUNTIN COLORS*

vinyl



white
standard



tan



brown

interior wood grains



medium oak



dark oak



cherry



coppertone
hardware-brown &
wood grains

Colors shown are reproduced by mechanical process and may vary from actual colors of product.
Use actual color selectors.

WARRANTY & SERVICE

We stand behind our products with a
Transferable Lifetime Limited Warranty.
See actual warranty for details.
Ask about our glass breakage warranty.

MORE GLASS OPTIONS

Bronze or Gray tint
Krypton fill
Double strength glass
energySMART® XL Low-E coating
Heat Mirror™
Low-E film is fixed between two glass panes.
Heat Mirror SC75 argon fills both air spaces
Heat Mirror SC75 S argon fills both air spaces
+ Low-E glass coating

*options



www.polaristechnologies.com



intercept.
SPACER SYSTEM



NAMI Certified
National Accreditation
& Management Institute
www.namicertification.com

Member
American Architectural
Manufacturers Association
www.aamanet.org



www.energystar.gov



Participant
National Fenestration
Ratings Council
www.nfrc.org